



KORT

SIGN DESIGN

BLUE HILL
CO-OP

serving local + organic since 1974

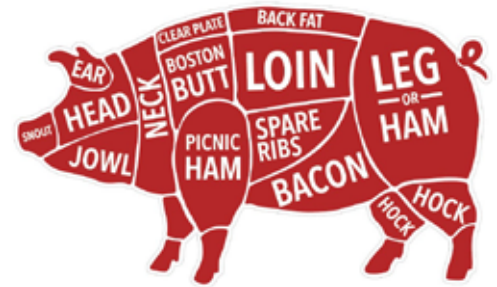
** black background is for proofing only
Use Sherwin Williams SW7105 Paper White
to paint connector bars

1.5" thick HDU
white faces and sides

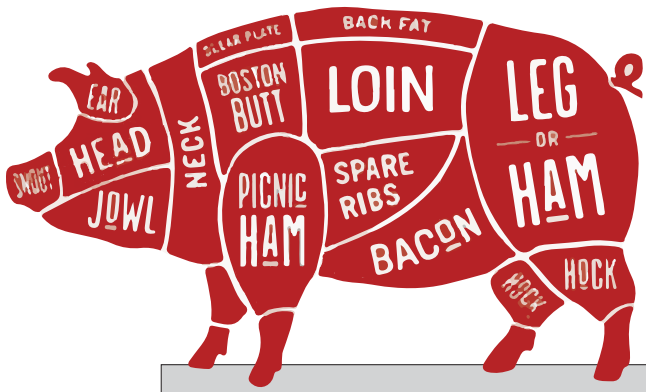
fresh

2" thick HDU
white faces and sides

MEATS



fresh
MEATS



fresh
MEAT

2-sided signs - painted graphics

RESTROOMS

CUSTOMER
SERVICE



2-sided signs - painted graphics

RESTROOMS

CUSTOMER
SERVICE



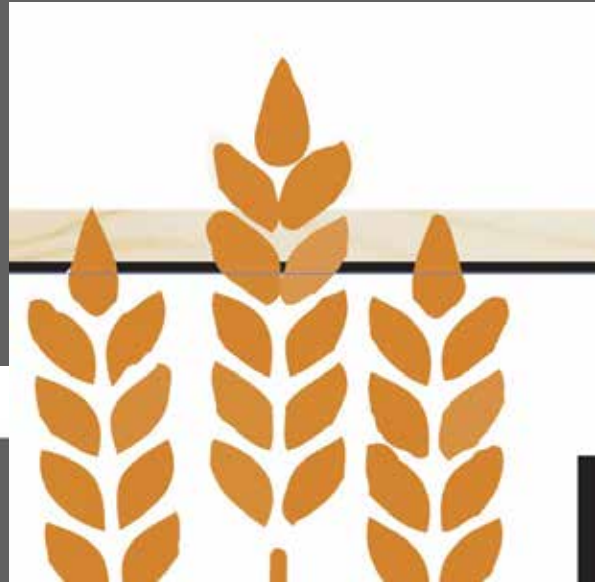
styrene print - square cut



dimensional letters
1/4" black PVC



dimensional shapes
1/4" white PVC -
White "stem" anchor for
wheat kernels placed
above the sign



dimensional letters
1/4" white PVC
painted red - face
and sides



styrene print - square cut





WHY BUY BULK?



SAVE MONEY



Purchased in quantity, bulk savings are passed on to you! Buy as much as you want or as little as you need and save by having just the right amount at a reduced cost.

LESS WASTE



Buying bulk

- eliminates packaging waste.
- allows you to bring your own jars, bags, and bottles!
- reduces food waste at home

VARIETY



Travel cuisines of the world right here at the Co-op! From spices to flour to nuts, shopping bulk provides a wider selection than packaged products offer.

styrene print - square cut
** back of wheat can be either painted or left white

dimensional letters
1/4" black PVC

WHY BUY BULK?

styrene print - square cut

GRAB + GO

salads • sandwiches • sides  MADE RIGHT HERE

dimensional letters
1/4" black PVC

GRAB + GO

aisle 1	CRACKERS	BREAD	BAKED GOODS	WINE CIDER BEER
aisle 3	SNACKS COOKIES BARS	BAKING NUT BUTTERS JAM	CEREAL GRANOLA JUICE	COFFEE + TEA DRINKS
aisle 4	OILS VINEGARS	PASTA TOMATOES	CONDIMENTS SOUP SPICES	BEANS GRAINS

holes 3/4" from top and side edges

aisle 1	CRACKERS	BREAD	BAKED GOODS	WINE CIDER BEER
aisle 3	SNACKS COOKIES BARS	BAKING NUT BUTTERS JAM	CEREAL GRANOLA JUICE	COFFEE + TEA DRINKS
aisle 4	OILS VINEGARS	PASTA TOMATOES	CONDIMENTS SOUP SPICES	BEANS GRAINS

holes 1/2" from top and side edges

VITAMINS	DIGESTION & PROBIOTICS	IMMUNE SUPPORT HERBS
HOMEOPATHICS	INFLAMMATION FIRST AID	PROTEINS
BABY & KID'S HEALTH	SKIN CARE OILS	ORAL CARE
BATH & HYGIENE	HAIR CARE	CLEANING & PAPER
HOUSEHOLD	PET SUPPLIES	

holes 1/2" from top and side edges

ICE CREAM 🍎 DESSERTS	WINE 🍎 BEER	🍎 FROZEN MEALS
FRUITS 🍎 VEGETABLES	BREAD 🍎 BREAKFAST	🍎 DRINKS
MEATS 🍎 SEAFOOD	YOGURT 🍎 BULK	MILK 🍎 DAIRY
🍎 NON-DAIRY	🍎 BULK	

5" tall numbers painted black

1

3

4

styrene print qty. 2 - square cut
** sign is 100" long - seam
will be mostly hidden behind radish

SALAD +

HOT BAR

SALAD + HOT BAR \$9.95/lb

SOUPS | \$3.95 cup \$5.95 bowl

dimensional letters
qty. 2
1/4" black PVC

SALAD +

HOT BAR

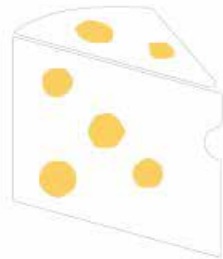
dimensional logo
qty. 1 of each
1/4" white PVC
** puzzle fit to
radish bulb - please
make sure they fit together



dimensional logo
qty. 1 of each
1/2" white PVC
** puzzle fit to
radish greens - please
make sure they fit together



styrene print - square cut



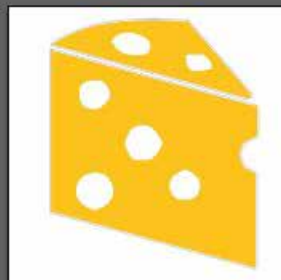
CHEESE

local • imported • domestic

dimensional letters
1/4" black PVC

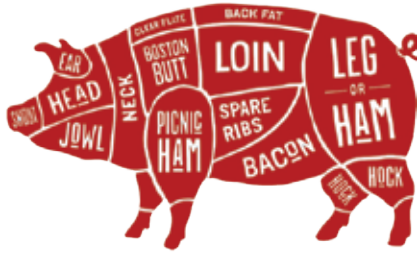
CHEESE

dimensional letters -
holes to be cut out -
1/8" white border on
outside edges
print/matte lam/mount
to 1/4" white PVC



CHEESE
local • imported • domestic

Wood backer: 69x28"
(2) White placards: 64.5x23.5"



fresh
MEATS

LETTERS - 2-3" thickness
(4) 12"H letters: MEAT
(1) ~10" letter: f
(4) 5-8" letters: resh
Pig cutout: 40.5x25"

SALAD + HOT BAR
SOUPS \$3.49 8oz \$3.49 8oz \$3.49 8oz
HOT + SALAD BAR \$8.99/lb

Wood backer: 106 x 23.25"
(2) White placards: 100 x 18.5"
(2) vegetable cutouts: ~13x32"

WHY BUY BULK?

SAVE MONEY

Purchased in quantity, bulk savings are passed on to you! Buy as much as you want or as little as you need and save by having just the right amount at a reduced cost.

LESS WASTE

Buying bulk

- eliminates packaging waste.
- allows you to bring your own jars, bags, and bottles!
- reduces food waste at home.

VARIETY

Travel cuisines of the world right here at the co-op! From spices to flour to nuts, shopping bulk provides a wider selection than packaged products offer.

RESTROOMS

CUSTOMER SERVICE



Programed CNC with VCarve to Cut Letters out of HDU Foam Board



Spray Painted Letters



Using Template to Arrange Letters



Letters Together



Letters Together



Spray Painted Signs

Fabrication and Production of Signs



Hand Painted Apples



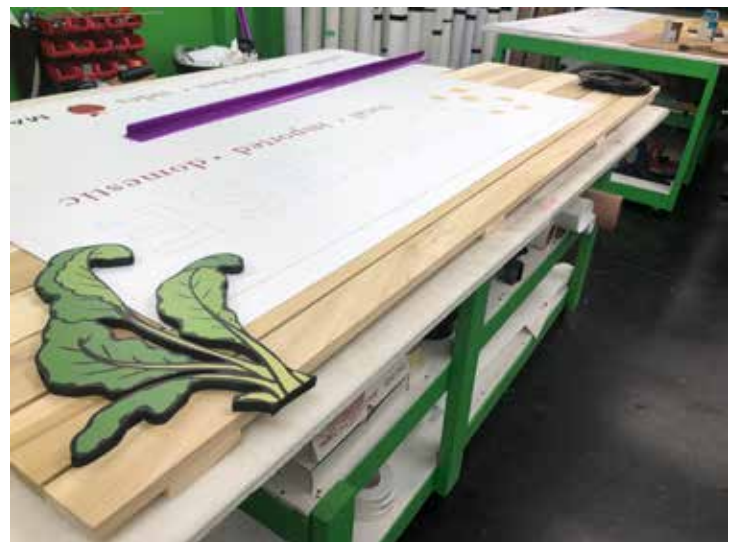
All Hand Painted Apples Laid Out



All Hand Painted Apples Put Together



Signs Ready to Apply Graphics



Laying Out Graphics to Apply



Hand Painting and Applying Graphics

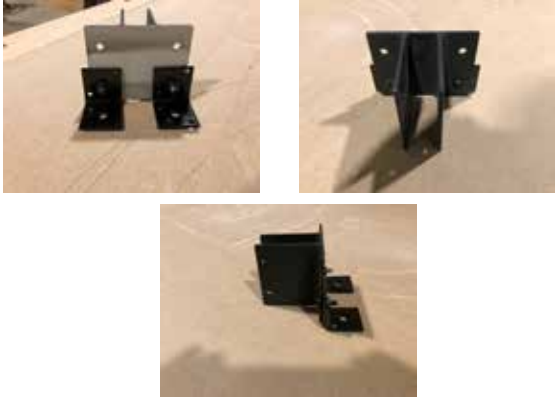


Added Parts and Added Signs

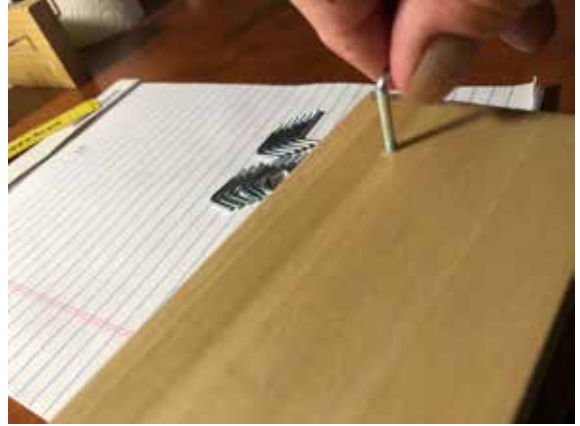


Completed Signs with PVC Parts

Fabrication and Production of Signs



Added Brackets to Signs



Added Pegs to Signs



Finished Signs with Brackets and Pegs

Fabrication and Production of Signs



Packaging and Labeling Signs



ORDER # 12527

ATTENTION:

Kevin Gadsby - General Manager
4 Ellsworth Road - P.O. Box 1133
Blue Hill, ME 04614 - 207-374-2165
gm@bluehill.coop - bluehill.coop

cell: 508-889-1022

Blue Hill Co-op Packing List & Instructions

1. Product Sign – Cheese [Qty = 1 ~50lbs]
2. Fresh Meats Cooler Sign [Qty = 1]
3. Salad + Hot Bar Sign [Qty = 1 ~75lbs]
4. Grab + Go Wall Sign [Qty = 1 ~30 lbs]
5. Product Flag Signs [Qty = 10]
6. Aisle Number Signs [Qty = 3]
7. Register Number Signs [Qty = 4 Four ~4lbs]
7b. Long tube with pipes ~ 30lbs
8. Category Signs & Metal Brackets [Qty = 17]
9. Misc. Flag Signs – Bathroom & Customer Service [Qty = 1 each ~2 lbs]
10. Bulk Foods Sign - [Qty = 1 ~ 80lbs]

For the hanging signs; #1 - Product Sign - Cheese, #3 - Salad + Hot Bar, #6 - Aisle Number Signs and #10 - Bulk Foods Sign; no hanging hardware included due to the unknown nature of the building interior. **Installers must provide all hanging materials and hardware. {see weights above}**

#2 Fresh Meats Cooler Sign

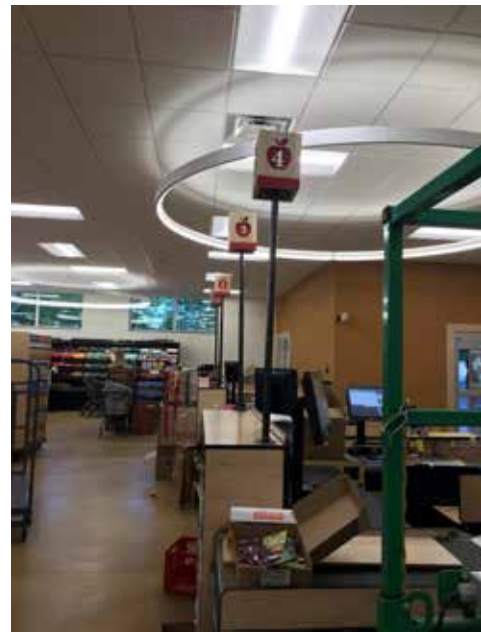
Please take extreme care in handling, removing and installing. 2 - 3 people on this! Letter positions are marked on the 2”x6” black board. “fresh” is attached to the M and E - **BE CAREFUL** removing from the packaging.

#5 Product Flag Signs

All assembled with product placards. Hardware for wall mounting is included.

#6 Aisle Number Signs

Product placards are in a separate box and must be placed on each sign.



Final Completed Signs In Store Pictures